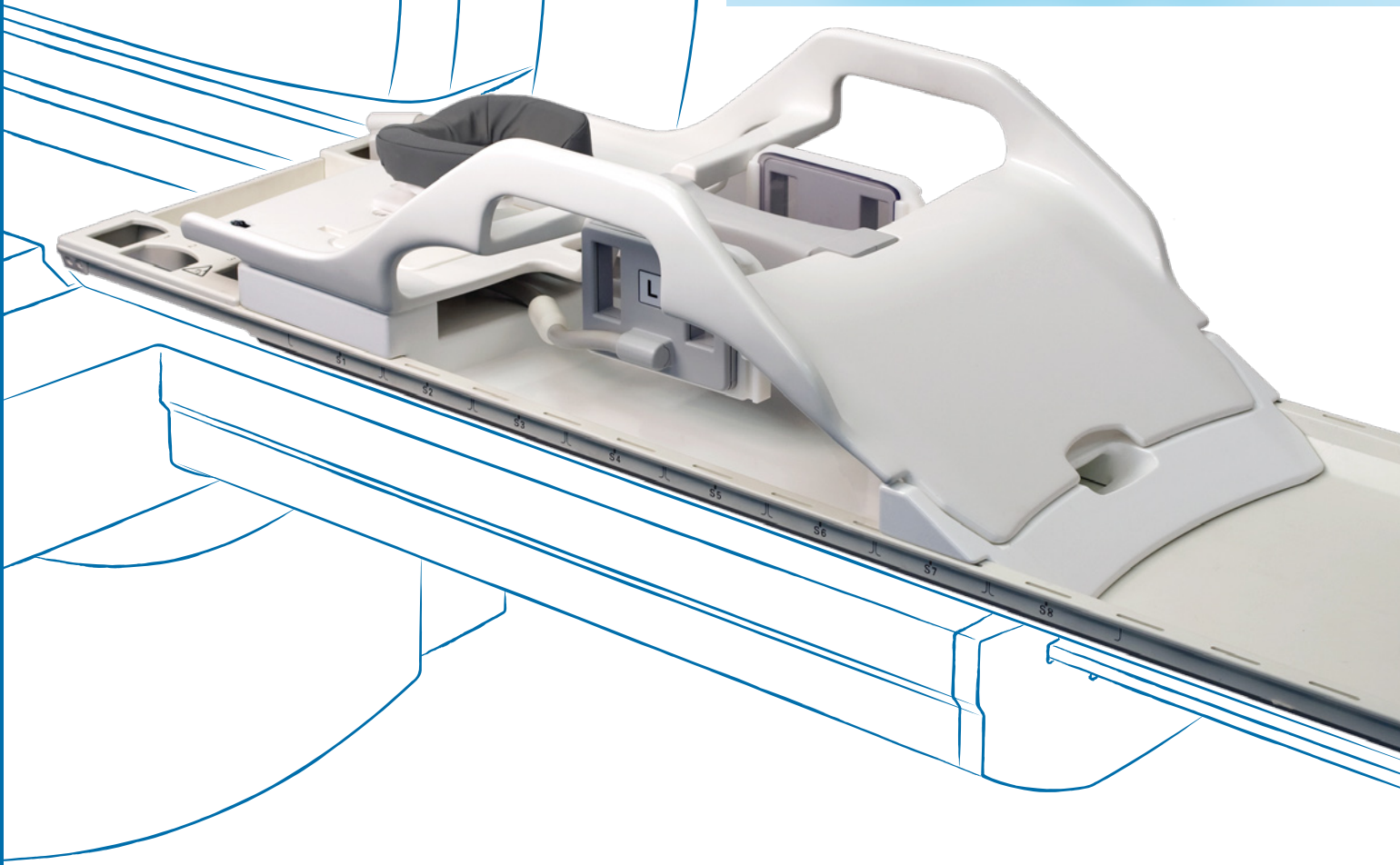


Confidence in Diagnosis  
Accuracy in Intervention



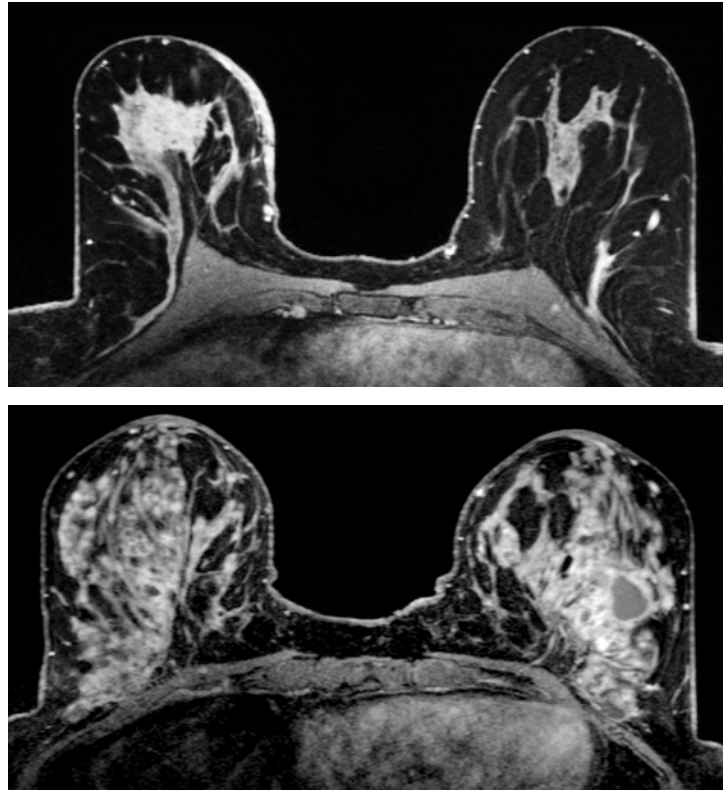
## Meet the new benchmark for Breast MR Imaging: Vanguard®

Vanguard®, an innovative approach to breast MR imaging and intervention, provides you with an integrated solution for your Women's Health program. Our dedicated Breast MR Coil System is optimized to provide unprecedented improvements in image quality, access for intervention and patient satisfaction.

Outstanding image quality is afforded with the advent of Variable Coil Geometry™ (VCG). This novel technology allows customized coil positioning for each patient, resulting in exceptional isotropic images. Redefine breast imaging at 1.5T.

As your partner in patient care, Sentinelle Medical delivers a system that permits access to all quadrants of the breast for intervention. The Vanguard® system gives you the ability to target lesions inaccessible in other traditional coil designs, providing you, the physician, with confidence to execute accurate interventions. The Vanguard® system provides you with the highest quality in patient care.

## High Quality Imaging at 1.5T



### Confidence in Diagnosis

Sentinelle Medical's patented innovation, Variable Coil Geometry™, improves image quality over traditional breast coils by customizing the position of the coil for each breast of each patient. Every patient's anatomy is different and it is important to have a breast MR coil system that can adjust to every individual. Variable Coil Geometry™ improves signal and results in higher quality isotropic images. View your breast images with the same clinical confidence in axial, sagittal, coronal or radial reformat.

Vanguard® technology enables imaging protocols to utilize increased acceleration factors, resulting in reduced scan times, higher matrices and improved image quality. Acquire submillimeter isotropic images in less time and with more signal. Detect, diagnose and treat disease earlier, improving patient outcomes.

## Complete Access for Intervention

### Accuracy in Intervention

Customize positioning using multi-axis grids for intervention. It is now possible to access targets in areas inaccessible with traditional coils. Position grids high up into the axilla for targets in the outer upper quadrant and access areas medial and posterior with the innovative design.



## Use with Open MRIs



### Flexibility of Design

In open bore MRIs, Sentinelle Medical's customized riser allows you to take advantage of the additional room. Have complete cranial-caudal access and lateral access to the breast for positioning. Image larger patients and reduce the anxiety of all patients. Improve accuracy, improve confidence and improve patient care.

### Increased Customer Satisfaction

Sentinelle Medical is committed to the best overall patient experience. Our patient-centric system utilizes an innovative support and padding design resulting in improved comfort, greatly reducing artifacts due to patient movement. This means more reliable exams with less troubleshooting. The improved patient experience leads to increased customer satisfaction and increased referrals.

## Improved Patient Comfort



## Contact Us for More Information

Sentinelles Medical Inc.  
3080 Yonge St. Suite 6020  
Toronto, Ontario, Canada  
M4N 3N1

866-735-3744

[www.sentinellemedical.com](http://www.sentinellemedical.com)



Sentinelles Medical Inc. reserves the right to make changes in features shown herein, or discontinue the product described at any time without notice.